

# GMT™

## THE SOLLATEK GLOBAL MOBILE TRACKER (GMT)



Complete asset tracking  
and monitoring of cooler  
performance.

*Sollatek*™  
the power to protect

The Sollatek Global Mobile Tracker (GMT) provides essential, accurate and cost effective information to OEM manufacturers.



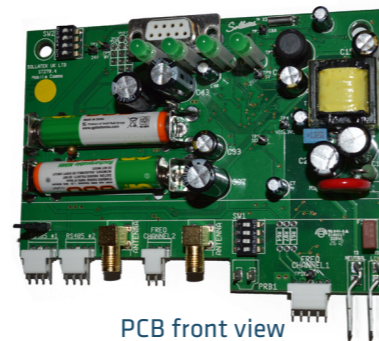
## GMT™ THE SOLLATEK GLOBAL MOBILE TRACKER (GMT)

### Key features:

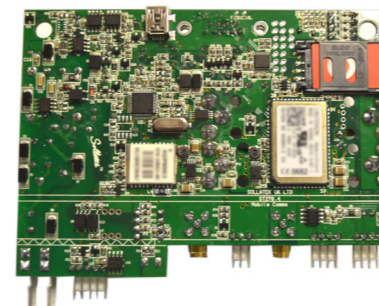
- Asset tracking and monitoring of cooler performance.
- Receive alarms from coolers and remotely diagnose problems.
- Data collection and logging.
- Reduce service calls.
- Anticipate planned service visits.
- Receive traffic/sales information.
- Track cooler location and Geo-fencing.
- Detect shock/tipping and abuse of cooler.

### GMT Mobile Modem

- Tough, splash resistant enclosure fits inside cooler.
- Sends and receives data to the central monitoring system over the mobile phone network by GPRS.
- Integral SIM card
- Integral microcontroller for intelligent system monitoring and diagnostics.
- Powered from mains supply.
- GPS receiver to find exact cooler location.
- Shock and tilt sensor to detect transport or abuse of cooler.
- Real time clock and data memory to log alarms, location, warnings, etc.
- Battery backup so as to be able to communicate during power cut or if cooler is disconnected. Also allows cooler position to be tracked in the event of theft.
- RS485 expansion port for connection to other devices such as power and kWh sensor or to run a string of coolers.



PCB front view



PCB rear view

### Antenna

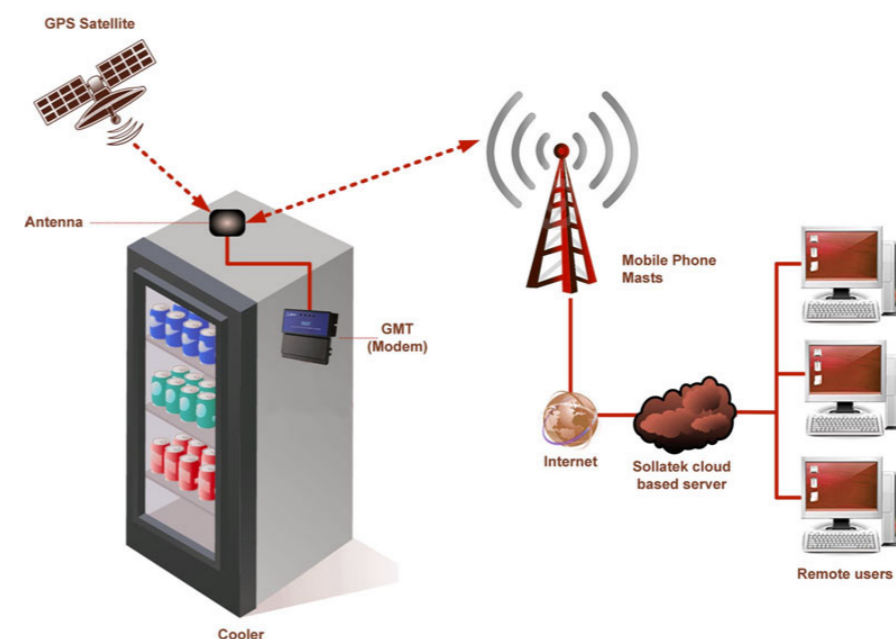
- Dual antenna for both GPRS data tx/rx and GPS position rx.
- Fits on the outside of the cooler.
- Discrete, low profile design does not attract attention. Only 75mm wide and 14mm high.
- Built in low noise amplifier to give improved GPS reception.
- Very tough, robust design to resist vandalism.



High gain Antenna

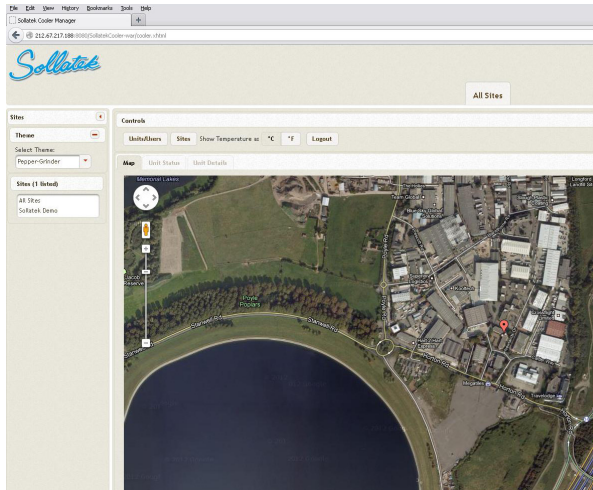
Dual Antenna

### General system diagram



## Central Monitoring System

- Web server connects to each cooler on a regular basis to collect data and check status.
- Logs all data and provides analysis and warnings via tables and graphs.
- Real time maps of cooler geographic locations.
- Secure network to prevent unauthorised access to information.
- User log-ins with passwords and privilege control.



GPS Map location View

## Features

	GMT1	GMT2	GMT3	GMT4
GPRS	✓	✓	✓	✓
GPS			✓	✓
Shock/Tilt				✓
Battery	✓		✓	✓
FTO	✓	✓	✓	
RS485	✓		✓	
Additional Sensors				✓



Screen shot of Cooler Web application



the power to protect

**SOLLATEK UK LTD.**


Tel: +44 1753 688300

sales@sollatek.com

www.sollatek.com

Sollatek (UK) Ltd.  
Unit 9/10, Newlands Drive, Poyle 14  
Industrial Estate, Colnbrook, Slough,  
Berkshire SL3 0DX UK



Sollatek provides you with full back up support and a two year worldwide warranty on all products, with local support in  over twenty countries worldwide.



**ISO9001: 2008 accredited company**

All weights and dimensions are approximate. Specifications are subject to change without prior notice. ©Sollatek (UK) Limited 2012. All Rights Reserved. SOLLATEK and the SOLLATEK device are the trade marks of the Sollatek group of companies.