

SunPower60

SOLLATEK SOLAR POWER CHARGE CONTROLLER

Model :

SunPower60

Applications:

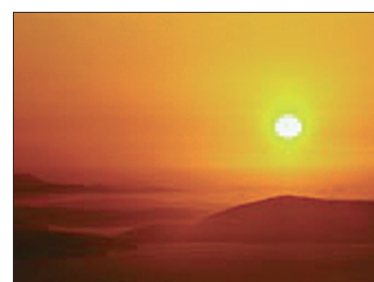
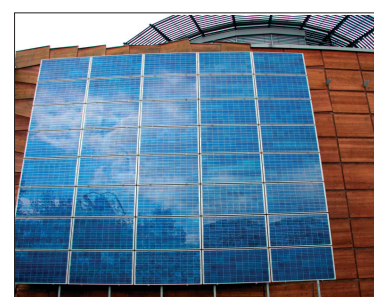
- Medium and large sized power systems.
- Security systems.
- Rural electrification.
- Larger home power systems.
- Commercial lighting.
- Bill Boards.

Features:


- Two stage charging (bulk and PWM).
- 12V, 24V and 48V versions available.
- Reverse polarity protected.
- Lightning protected.
- Open circuit protection.
- Over load protection.
- Short circuit protection
- LVD to protect battery from excess discharge.
- HVD to protect battery for excess charge.
- Adjustable voltage thresholds.
- Low power consumption.
- Solid state PWM float charging.
- 4-wire battery voltage sense.
- Suitable for flooded, stationary, maintenance -free and gel battery types.
- Fully automatic operation.
- Temperature compensated battery charging with optional external probe.
- Switch for LVD break/reset/test.
- Day/Night timer.
- Status indication by five LEDs.
- Digital LCD displays of voltage and current.
- Microprocessor controlled.
- High efficiency diode-less discharge protection.
- Tough metal enclosure for harsh environments.
- Warranty of 2 years. Sollatek provides full back up support on all its products, with local support in over twenty countries worldwide.



SunPower 60



SunPower60

| Specifications | | | | |
|---------------------------------------|---|---|------------|------------|
| System Voltage | : | 12V DC | 24V DC | 48V DC |
| Solar current | : | 60A DC max | 60A DC max | 60A DC max |
| Load Current | : | 60A DC max | 60A DC max | 60A DC max |
| Max array power | : | 1kWp | 2kWp | 4kWp |
| Max load power | : | 720W | 1.44kW | 2.88kW |
| LVD range | : | 10 to 12V | 20 to 24V | 40 to 48V |
| LV hysteresis range | : | 0.5 to 1V | 1 to 2V | 2 to 4V |
| HVD range | : | 13 to 15V | 26 to 30V | 52 to 60V |
| HV hysteresis range | : | 0.5 to 1V | 1 to 2V | 2 to 4V |
| Max current consumption | : | 215mA | 115mA | 65mA |
| Efficiency | : | >99% at full load, >98% at 10% load | | |
| Temperature compensation | : | -3mV per °C, with optional external probe | | |
| Day/Night Timer | : | Dusk to dawn, or 2 to 10 Hours, or 'normal' | | |
| LED indications | : | Sun, Full, Good, Low, Off. Indicate system function and status | | |
| Voltage display | : | 3½ digit LCD display indicating battery voltage | | |
| Current display | : | 3½ digit LCD display indicating battery, load, or solar current (switchable) | | |
| Spike and surge protection | : | MOV surge arrestors fitted on all external connections | | |
| Overload and short circuit protection | : | Solar 2x30A fuse, load 2x30A fuse | | |
| Power connections | : | 4x solar, 4x battery, 4x load | | |
| Signal connections | : | 2x external voltage sense, 2x external temperature sense | | |
| Connection Type | : | Screw terminal | | |
| Max wire gauge | : | 16 sq. mm (power), 2.5 sq. mm (signal) | | |
| Enclosure rating | : | IP54 | | |
| Operating Temperature | : | -10 to +70°C | | |
| Relative humidity | : | 0 to 95% | | |
| Altitude | : | 0 to 3000m | | |
| Dimensions | : | 300 x 250 x 150mm (H x W x D) | | |
| Weight | : | 5.5kg | | |
| Standards | : | ISO9001:2000, CE BS EN 60335  | | |

