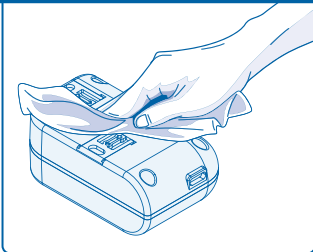


These instructions contain important safety instructions. Before using this product please read all instructions carefully.

- For best signal avoid mounting the GMC4 near / behind metal surfaces and mount on a surface on or close to the outside of the cabinet.
- Avoid mounting the GMC4 close to other electrical components. Electrical current can interfere with Wi-Fi and GSM signals, reducing location accuracy and transmission.
- The GMC4 can be mounted in any orientation.

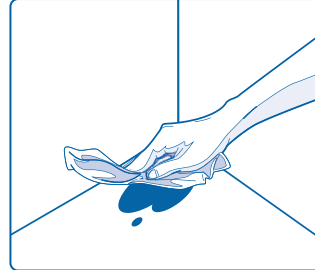
ADHESIVE PAD MOUNTING



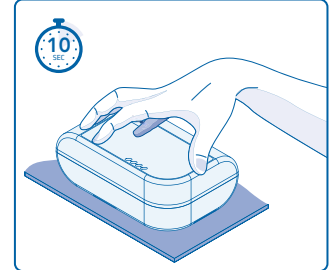
Clean and dry the base of the GMC4 with the alcohol wipe.



Remove the lining from one side of the pad and stick on the base of the GMC4

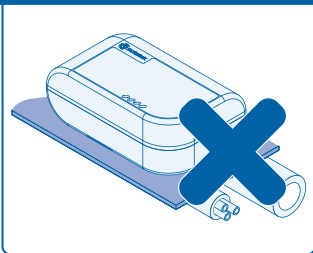


Clean contaminates from the installation surface with the alcohol wipe and dry.

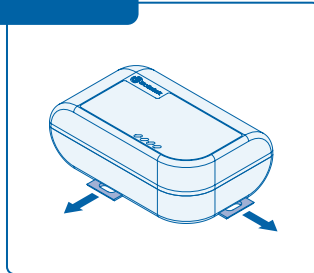


Remove the lining from the pad and immediately press the GMC4 into position.

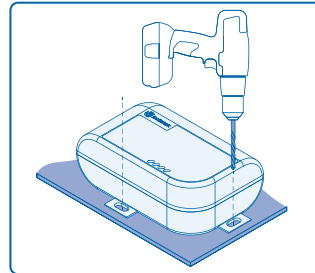
SCREW MOUNTING



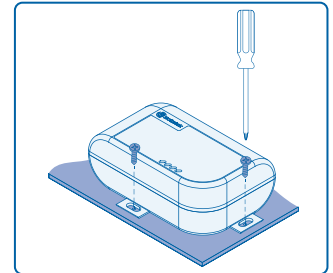
Ensure there are no pipes or wires behind the panel where the GMC4 is to be mounted.



Pull out the screw mounting tabs from the bottom of the GMC4.

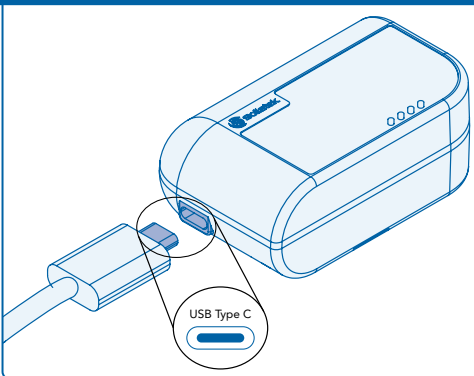


Mark and drill pilot holes.



Using a screwdriver, tighten the two screws to secure the GMC4 to the surface.

CONNECTING THE GMC4



This device must be installed by a qualified personnel.

Do not open the GMC4. There are no user serviceable parts inside.

It is not recommended for users to replace the battery so please contact Sollatek. The replacement battery should be of the same type.



The device cannot be disposed of as municipal waste therefore such waste should be collected and disposed of separately in accordance to EU directive 2012/19/EU.

WARNING!



Isolate power to the controller / cooler when installing the GMC4. Avoid hot/moving parts when positioning.

Only Sollatek connection cable should be used to connect the GMC4 to the Sollatek controller.

- Connect the USB-C connector in to the port on the side of the GMC4.
- Connect the other end of the connector cable into the controller's data port.
- Turn the supply ON to the controller and the GMC4 will power ON.

LED STATUS

LED	Pattern	Description
⏻		ON GMC4 ON, Powered by Mains
		OFF GMC4 OFF
🔋		ON Battery charging
		OFF Battery fully charged
📶		OFF, OFF GSM OFF
		ON, Flashing (0.2 s on/1.8 s off) GSM searching for network
		ON, Flashing (1.8 s on, 0.2 ms off) GSM connected to a network
		ON, Flashing (0.125 s on/off) GSM Data transfer in progress

